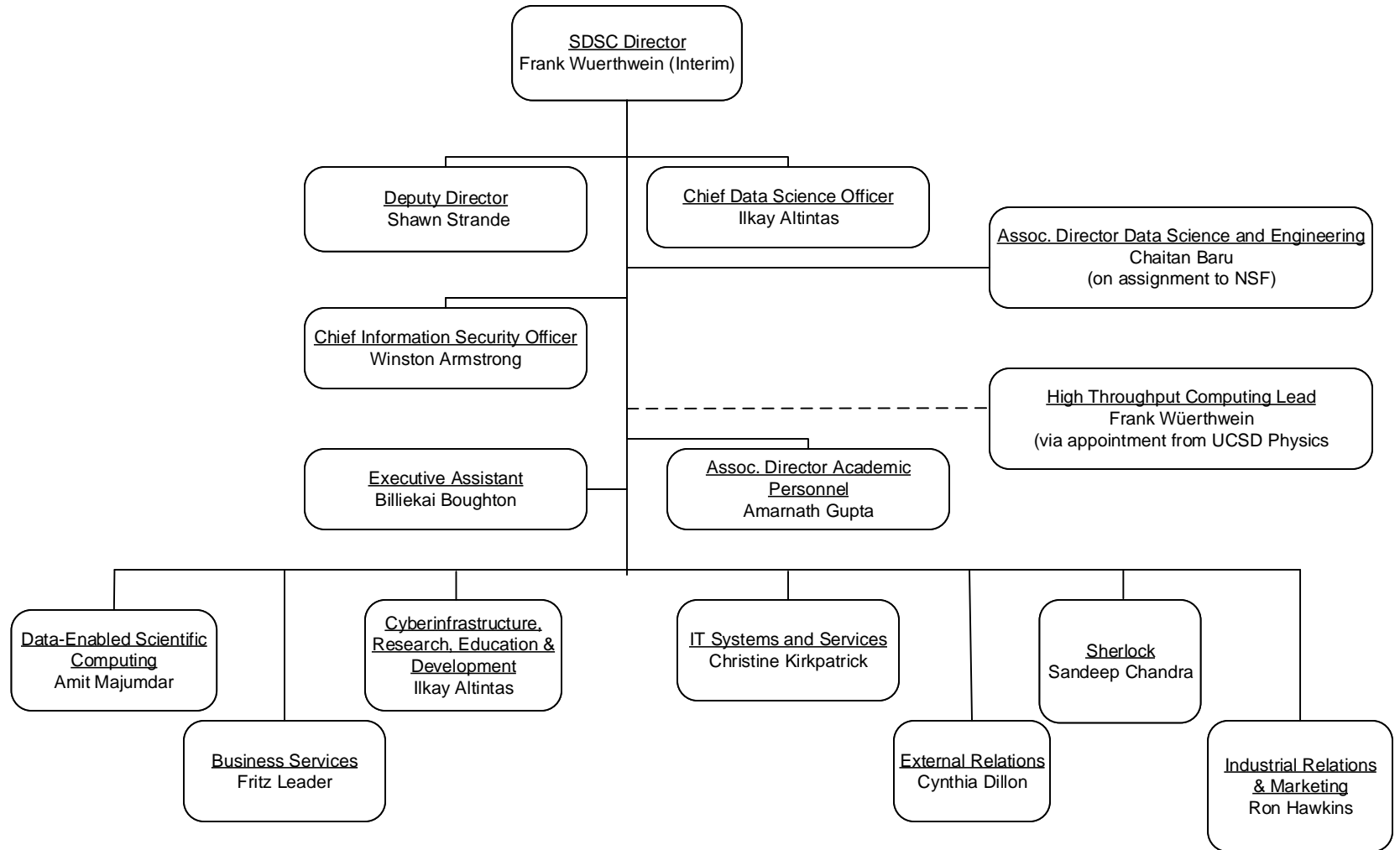
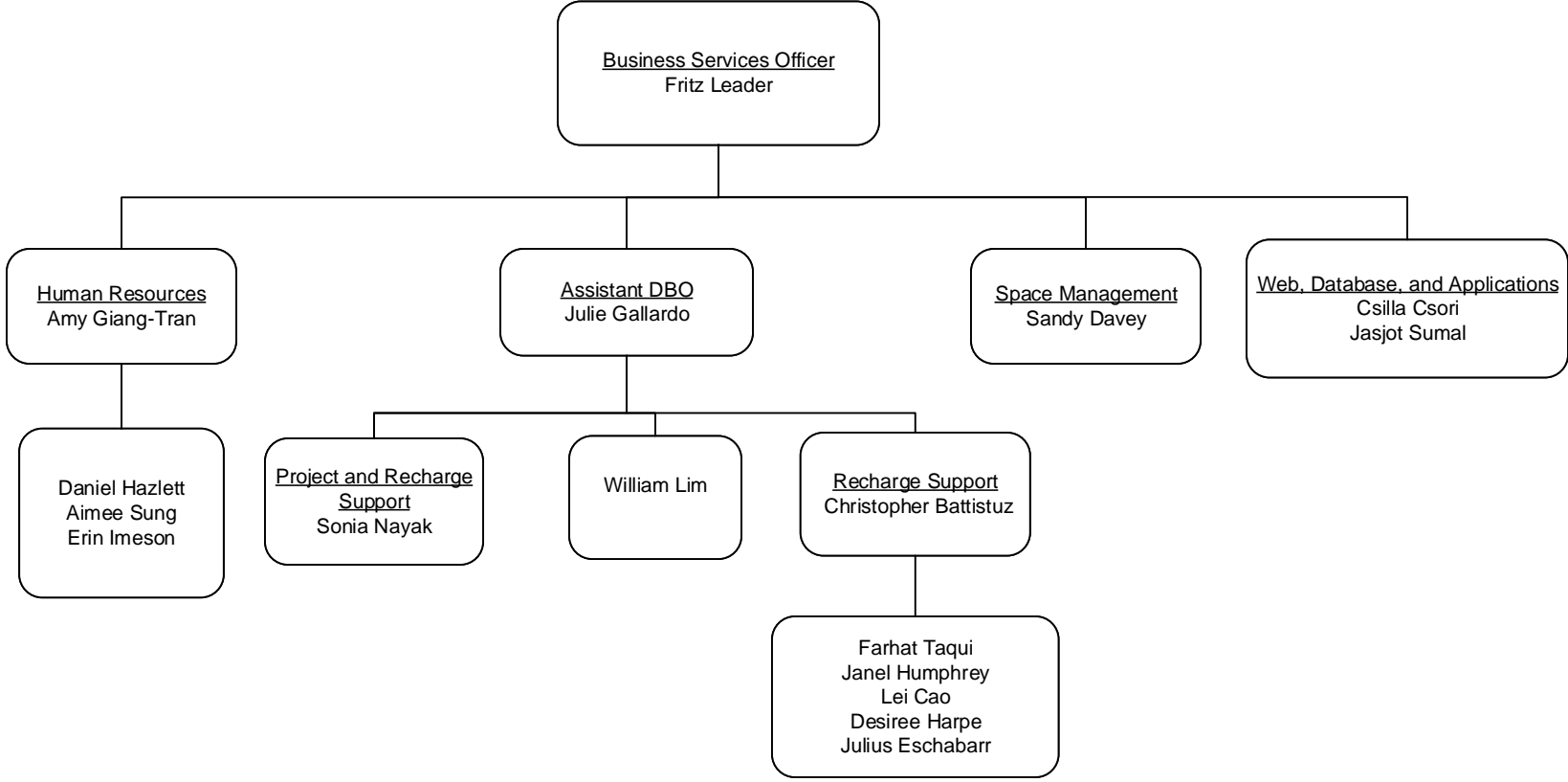


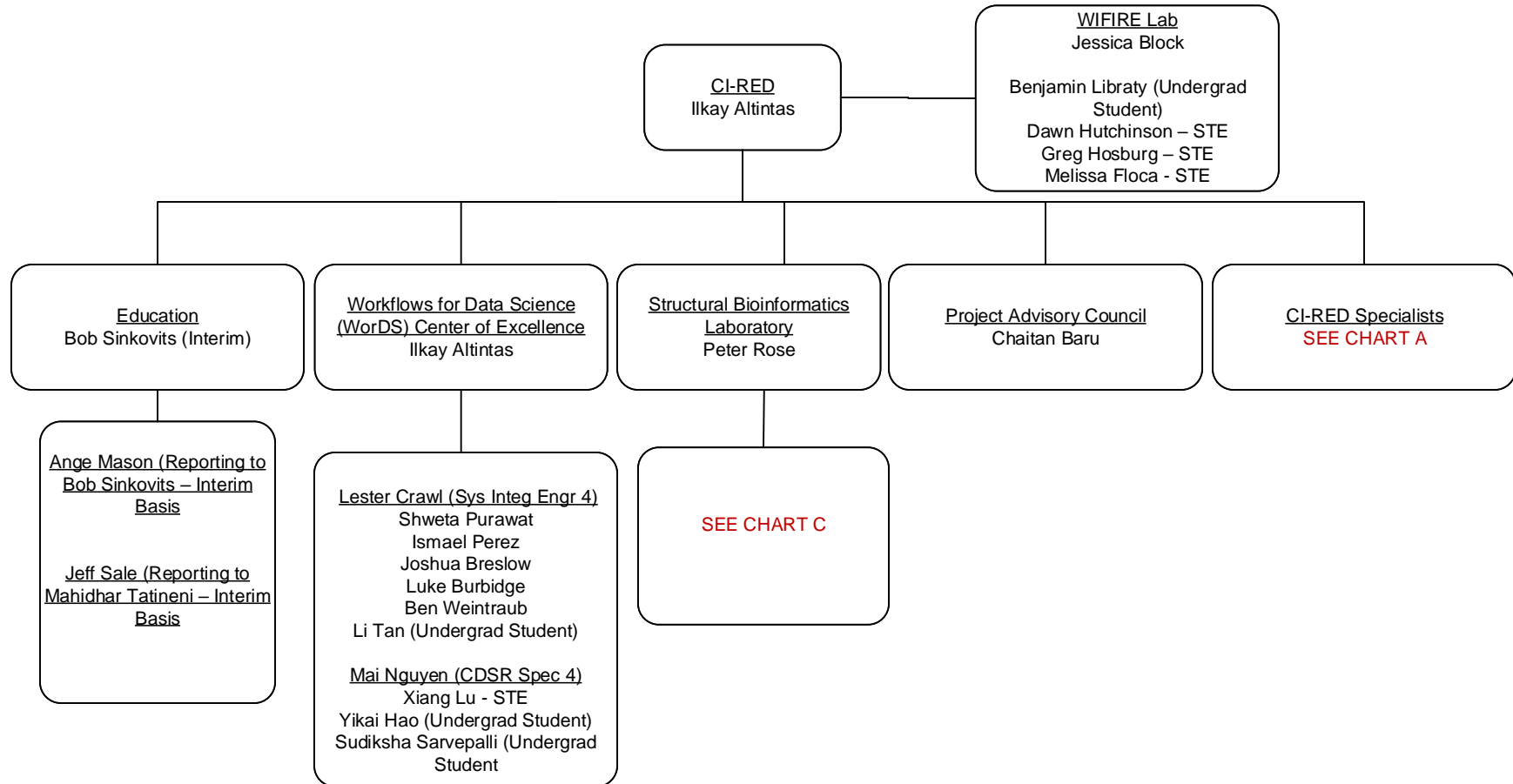
# Office of the Director



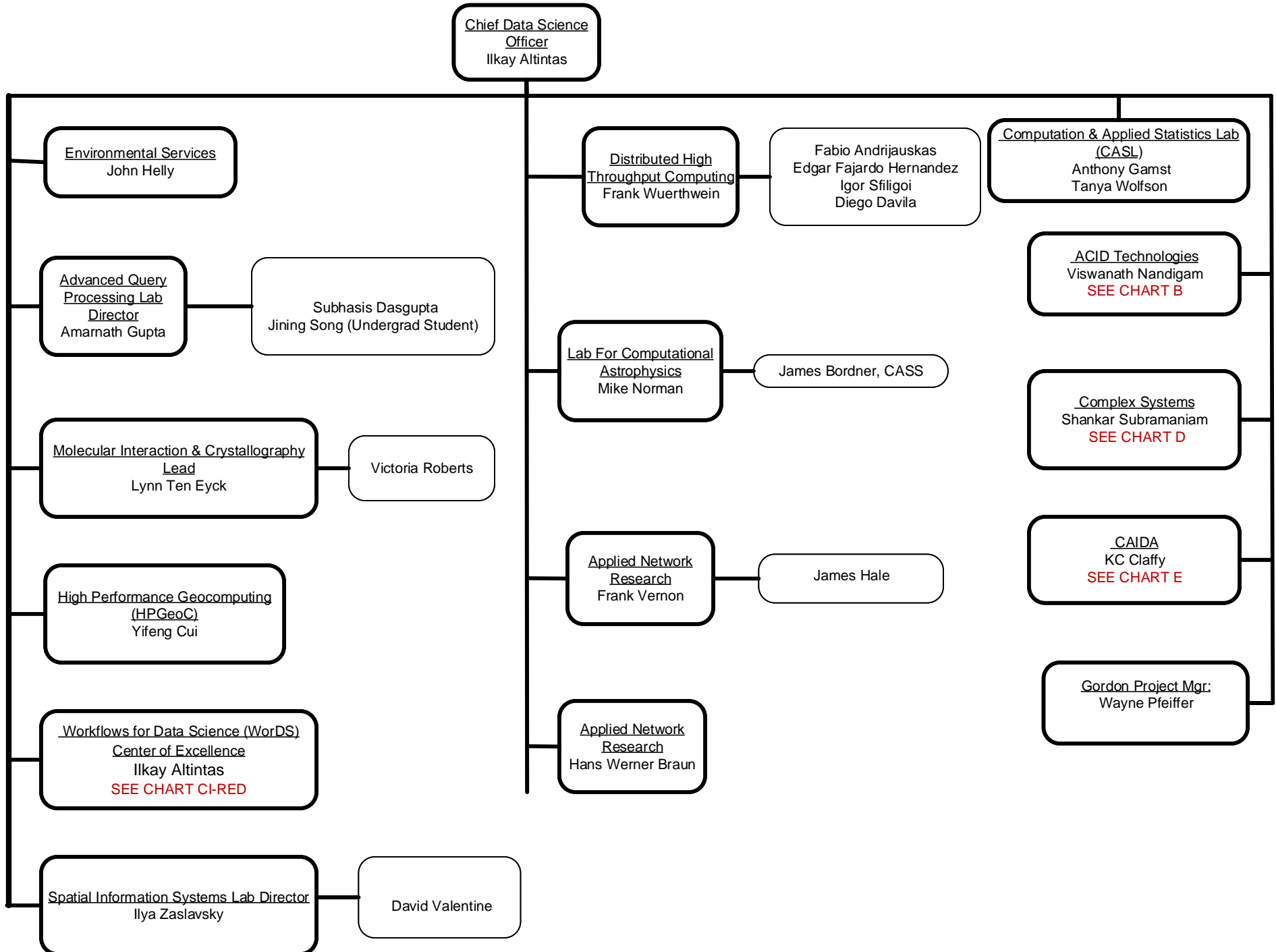
# Business Services



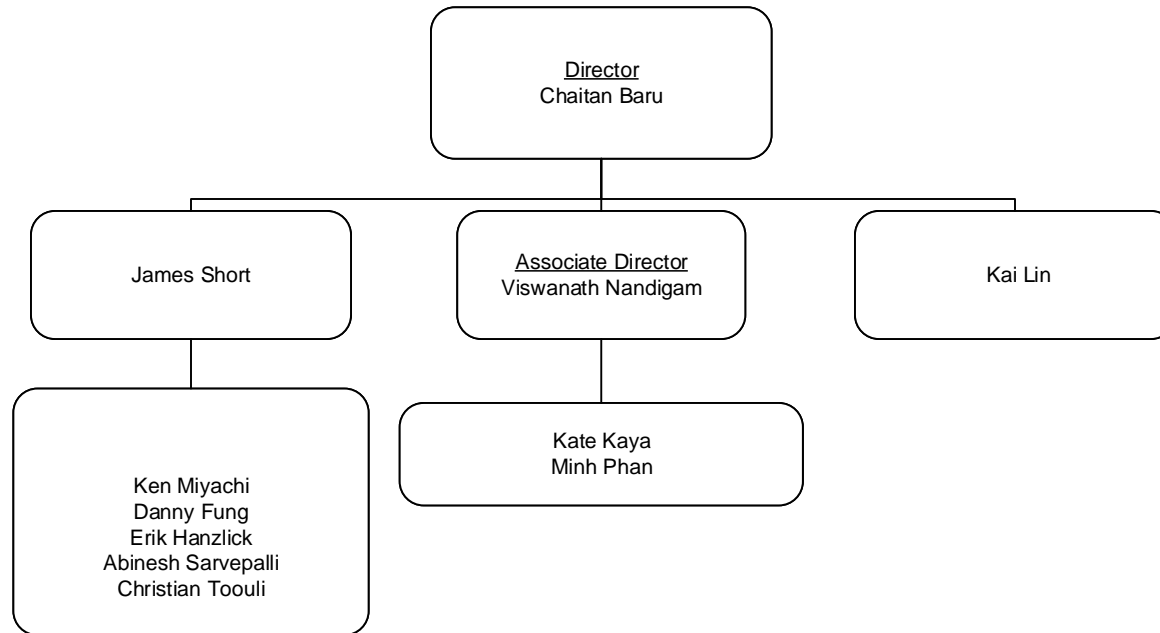
# Cyberinfrastructure Research, Education and Development (CI-RED)



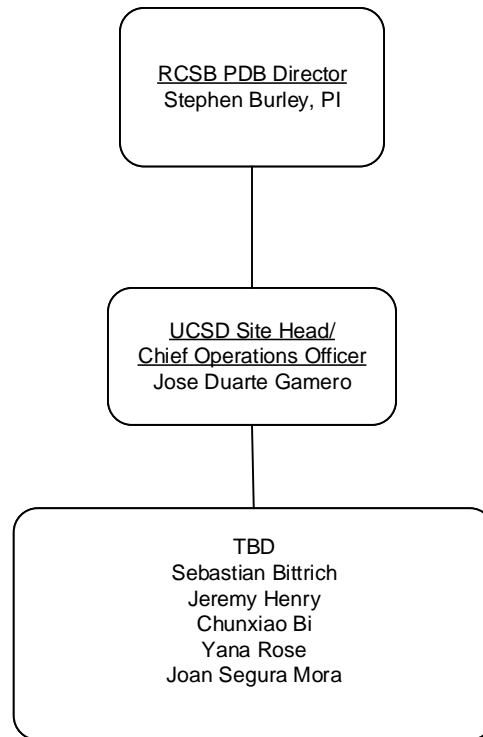
# CI-RED Specialists (A)



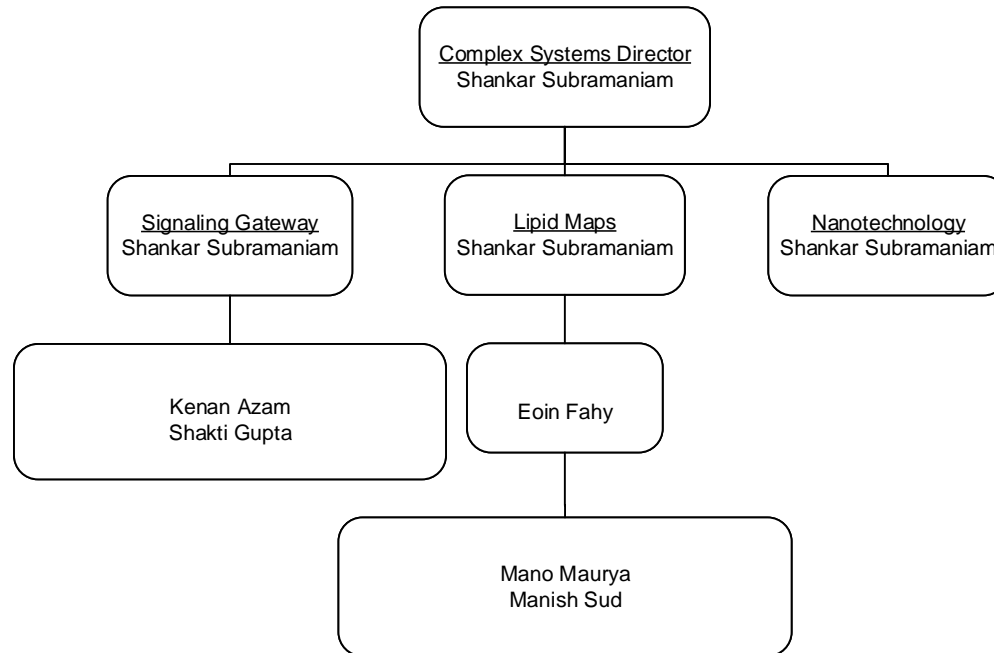
# Advanced Cyberinfrastructure Development Group - ACID (B)



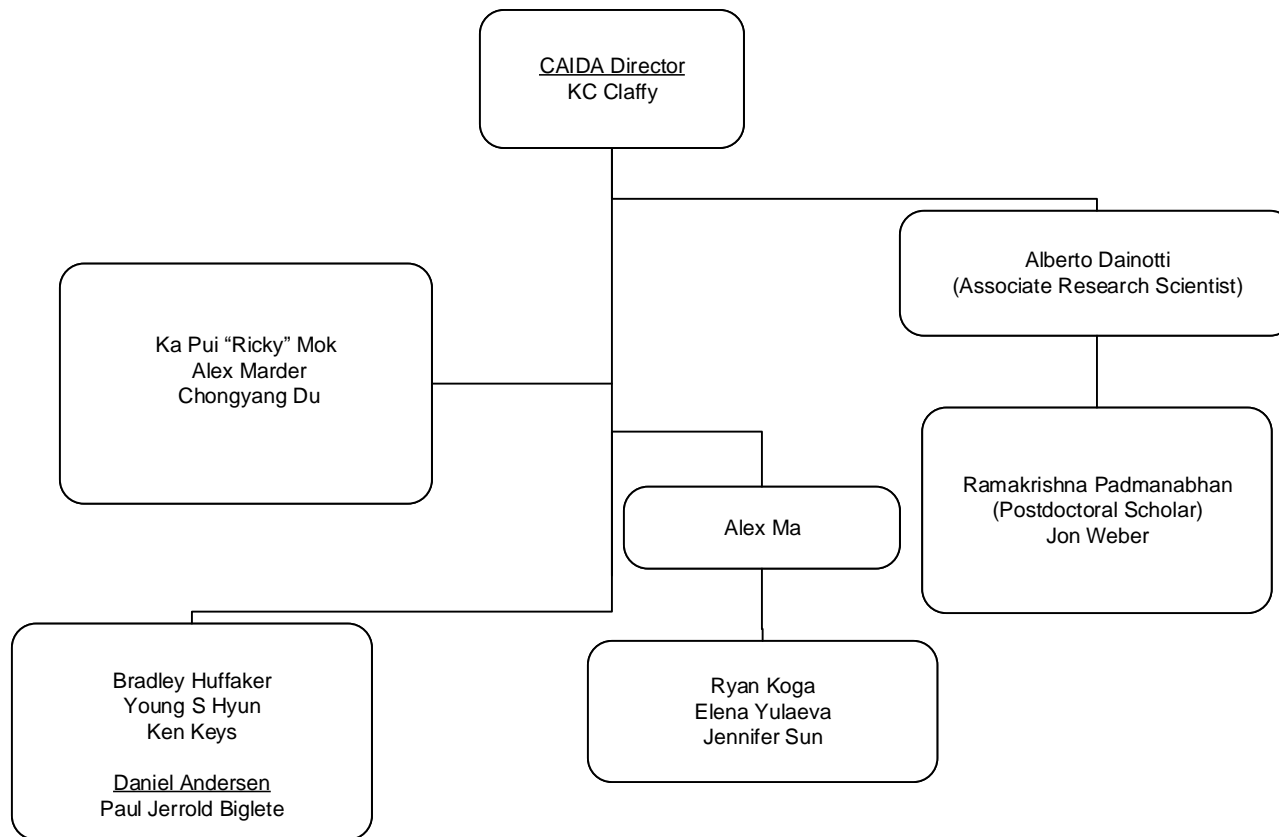
# CI-RED Specialists: Structural Bioinformatics (C)



# CI-RED Specialists: Complex Systems (D)

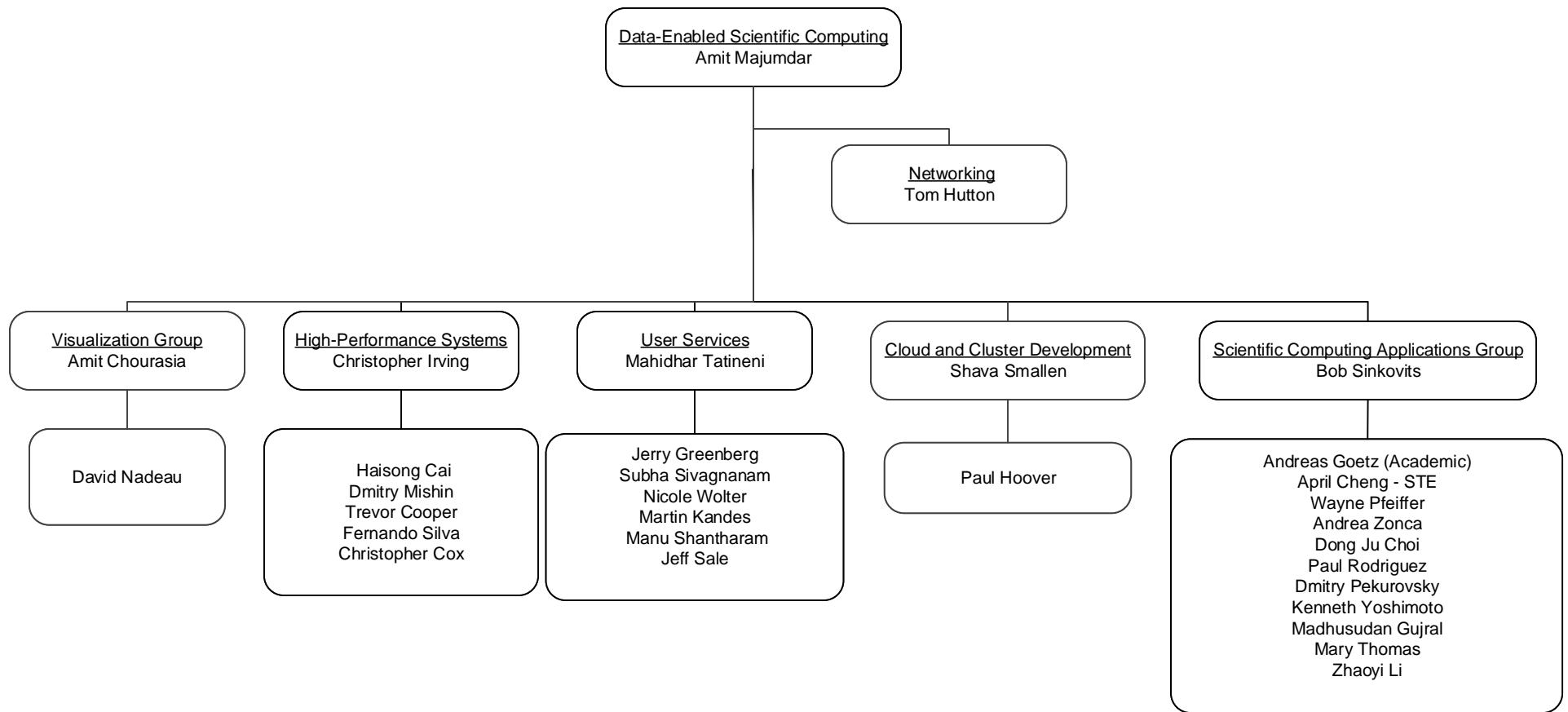


# CI-RED Specialists: CAIDA (E)

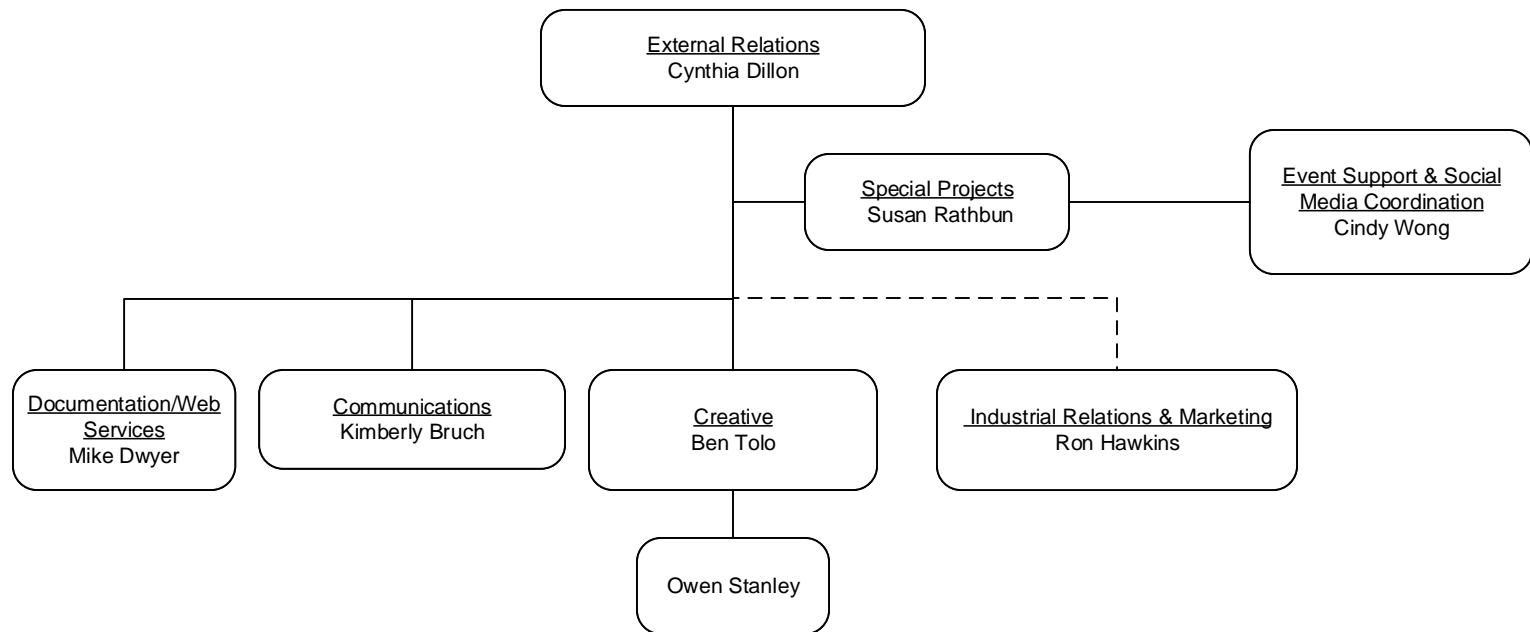




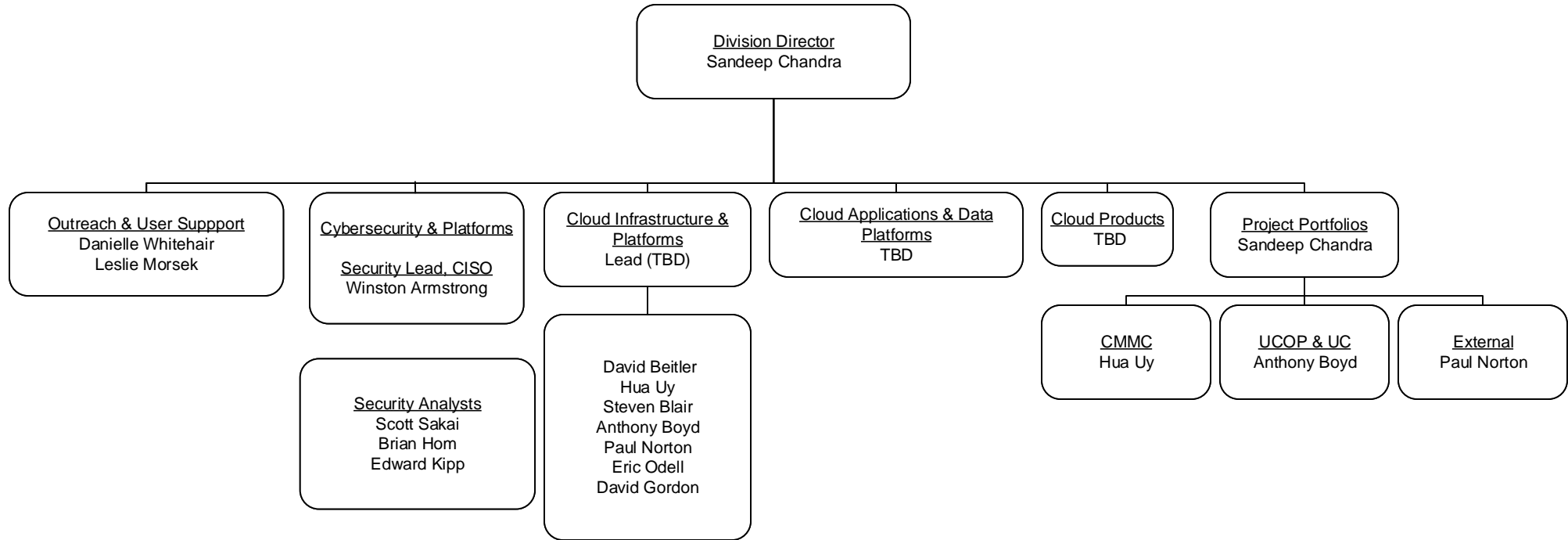
# Data-Enabled Scientific Computing



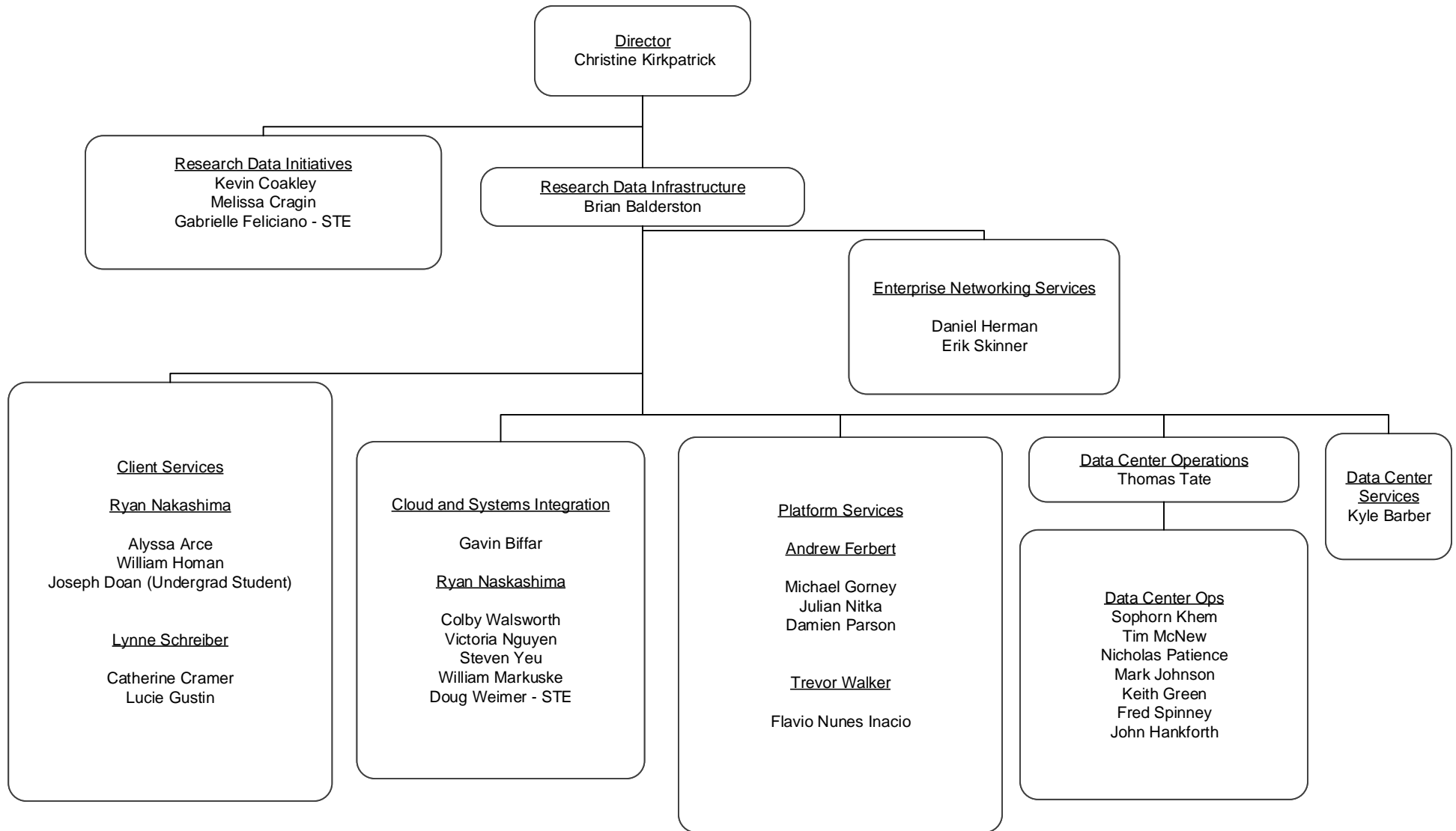
# External Relations



# Sherlock Division



# Research Data Services



# Sustainable Scientific Software

